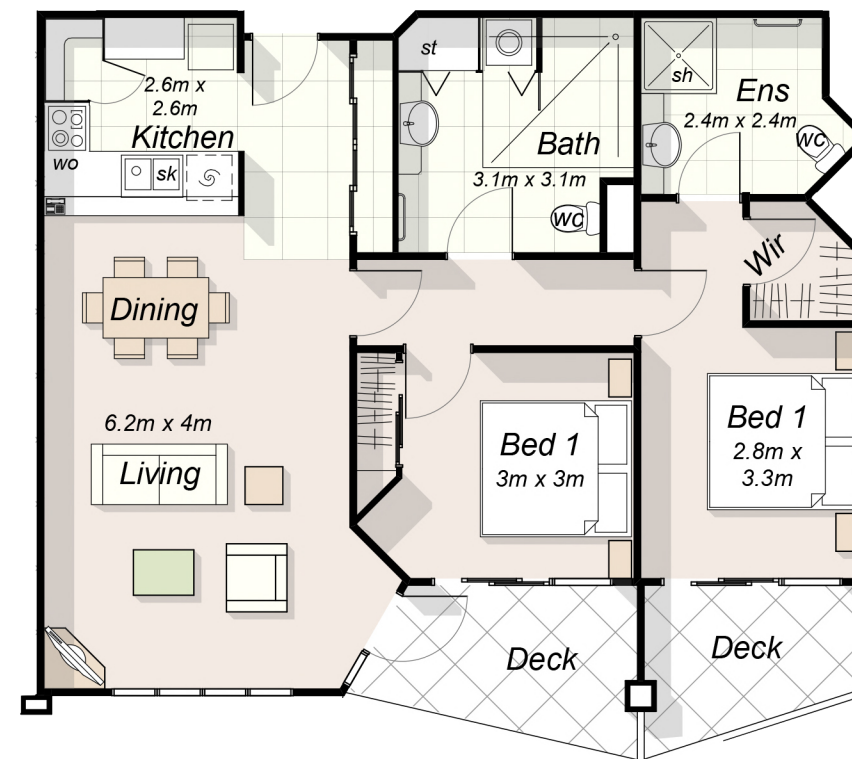


**Main Building - Unit Type 7**

Terrace Area = 7m<sup>2</sup>  
 Internal Area = 78m<sup>2</sup>  
**Total Area = 85m<sup>2</sup>**



**Main Building - Unit Type 8**

Terrace Area = 12m<sup>2</sup>  
 Internal Area = 85m<sup>2</sup>  
**Total Area = 97m<sup>2</sup>**

*Floor Plans*  
 Scale: 1:100 @ A3



Final layouts, materials and dimensions may vary slightly from those indicated

